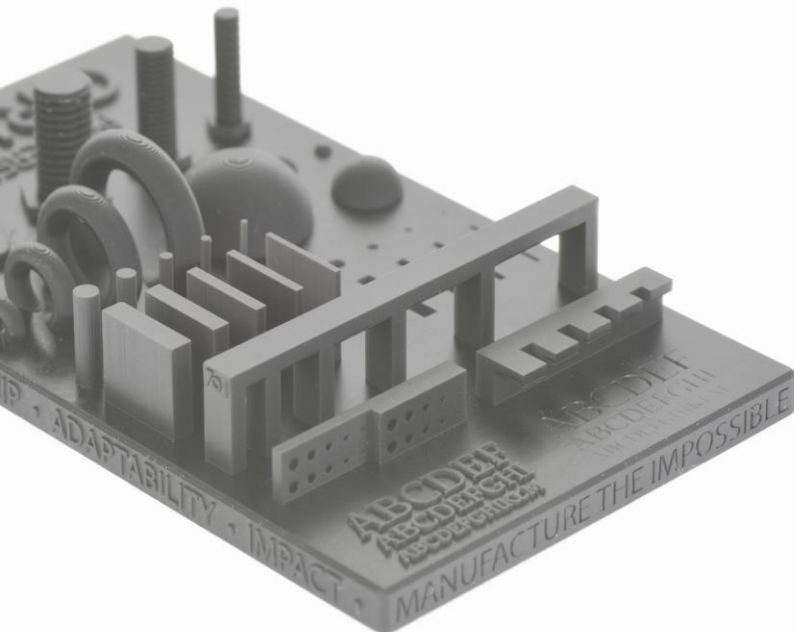
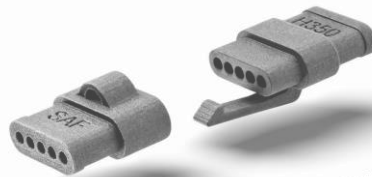
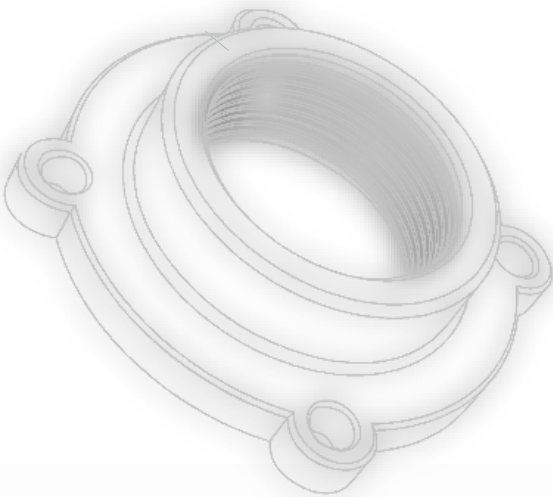


RED ENGINEER (MACKAYDRAFTING)

3D Printing & SCANNING

We empower your sustainable 3D printing applications



Why choose 3d printing

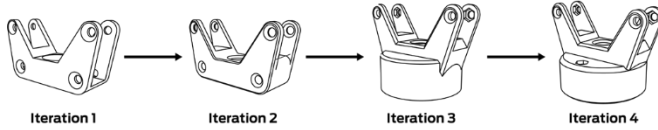
3D printing is a process that creates three-dimensional objects from a digital model. It's often called additive manufacturing (AM) because the objects are built by adding successive layers of material, one on top of the next. Conventional manufacturing uses subtractive methods where the desired shape is created by cutting material away from a solid block. 3D printing is less wasteful because material is only added where it's needed to create the part.

A 3D printer is the machine that builds the part. 3D printers differ based on the type of printing technology used and the size of the parts they can build.

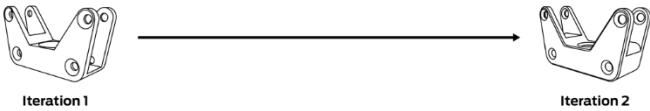
To make the part, the printer gets its "instructions" from a CAD model and software "slices" the CAD model into virtual layers. The printer then applies material where it's needed to build each layer until the object is completed.

DAY 1 DAY 2 DAY 3 DAY 4

3D PRINTING



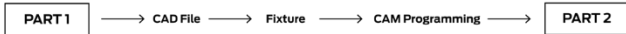
MACHINING



3D PRINTING



MACHINING



Provide a wide range of 3d Printing Services

- Complex Geometrical shapes
- Low volume Prototyping
- Ready -to -fit and printable prototypes
- Serving the industries which require high quality & finished parts



CONCEPT MODELS



FUNCTIONAL PROTOTYPES



MOLDS AND PATTERNS



JIGS AND FIXTURES



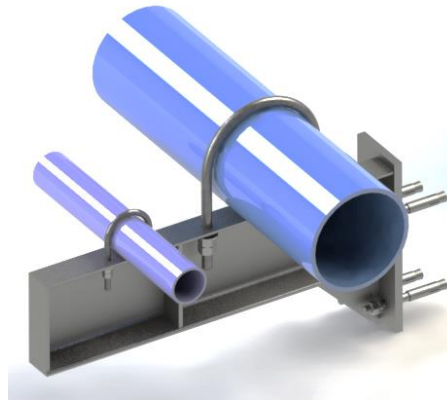
PRODUCTION PARTS



3d Printing Applications

- Rapid Prototyping
- 3d Design /Reverse Engineering
- Industrial Spare parts
- Automobile Parts
- Additive manufacturing
- Serial Production
- Tooling & Fixturing
- Customization

PIPE SUPPORT BRACKET



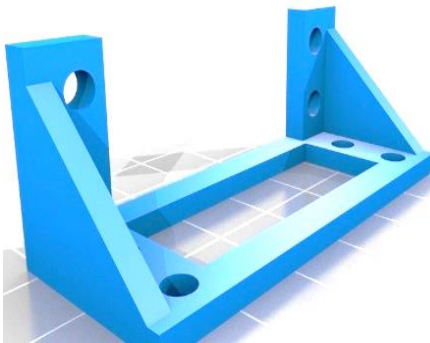
Pipe supports brackets play a critical role in securing and maintaining the alignment of pipes within various structures to provide the suitability to the structure.

CUSTOMIZE CLAMPS



Clamps are ubiquitous tools in various industries, serving the fundamental purpose of securing, holding, or fastening objects together in the realm of manufacturing and engineering.

CUSTOMIZE BRACKET



Specialized designs custom brackets allow to improve the overall visual appeal of installations. It is designed to comply with particular industrial

CUSTOMIZE NYLON SEALS



Customized nylon seals are specialized sealing components made from nylon material, tailored to specific requirements. It serves as barriers to prevent leaks, contamination, or fluid transfer between components

WELDING FIXTURE



A welding fixture is a specialized tool used in welding processes that is intended to precisely align pieces and securely hold them in place. Its main goal is to minimize distortions and stresses while ensuring accurate and consistent welds.

CUSTOMIZE PACKERS



A packer is a piece of material, such as mild steel, that is used to fill in any holes or voids left by the installation of two elements in order to support the structure.

END OF ARM TOOLING



Belt scraper blades are essential for preserving the efficiency of conveyor belts, worker safety, and general productivity. It's Utilizations are made to remove material from the conveyor belt by scraping it.

CUSTOMIZE FLANGES AND SPOOLS



CIRCLES



A circlip is a type of fastener or retaining ring. It has open ends that may be snapped into a groove that has been machined into a dowel pin or other component. A circlip's function is to allow rotation while impeding axial movement.

One of the main components of robotic technology is end of arm tooling (EOAT). It describes the apparatus that is connected to parts and pieces and is usually found at the extremity of a robotic arm. Consider it as the specific instrument that a robot employs to communicate with objects.

BELT SCRAPER BLADE



Custom flanges are made with precise measurements, materials, and configurations to fit particular parts as per their applications. One particular kind of flange utilized in pipe systems is the spool flange. It uses a short section of pipe (the spool) to join two pipes or parts, like pumps or valves. Etc.